

North American Computational Linguistics Open Competition 2026

Invitational Round Results

[A. Full Results](#) [B. Qualification Results](#) [C. Problem Results & Best Solution Awards](#) [D. Statistics](#)

A. Full Results

Note: Some values are rounded, so the scores shown for individual problems may not add exactly to the shown total.

ID	Initial	Ctry.	S/P	Total	J	K	L	M	N	O	P	Q	Award
					5.0000	15.0000	10.0000	15.0000	15.0000	10.0000	15.0000	15.0000	
201276	JL	US	PA	74.5729	5.0000	9.8762	4.9996	10.3942	7.6240	9.8571	13.9793	12.8425	Gold
204282	DS	US	ID	69.9349	5.0000	12.3944	6.9188	0.0000	7.6240	10.0000	14.4361	13.5616	Gold
202710	YJ	CA	ON	66.6381	5.0000	10.5662	6.0555	13.3996	3.0978	0.2857	14.4662	13.7671	Gold
215412	SC	US	CA	65.8895	5.0000	13.3717	7.0367	3.0236	4.5134	9.8571	9.5254	13.5616	Gold
201445	RB	US	CA	62.8206	5.0000	1.2505	9.7175	6.0453	11.0818	9.9286	8.2901	11.5068	Gold
202159	EZ	US	CA	61.9710	5.0000	13.3717	7.9274	3.1548	7.6240	0.8571	12.4264	11.6096	Gold
201926	SS	US	NJ	60.4769	3.2143	13.2830	7.6047	7.7620	2.6928	10.0000	8.1119	7.8082	Gold
207724	PD	CA	BC	58.4368	5.0000	13.3717	7.3819	0.0000	5.9039	9.8571	4.2852	12.6370	Gold
208983	NM	US	MI	57.6421	4.2857	12.9082	7.6047	5.2141	0.0000	9.3571	10.0531	8.2192	Gold

ID	Initial	Ctry.	S/P	Total	J	K	L	M	N	O	P	Q	Award
					5.0000	15.0000	10.0000	15.0000	15.0000	10.0000	15.0000	15.0000	
202211	KL	US	CA	56.6477	5.0000	14.4747	7.1532	1.4720	3.3005	0.2857	13.1465	11.8151	Gold
202738	PD	CA	ON	56.1443	5.0000	14.4136	5.2694	8.1882	0.7002	8.8571	0.0000	13.7158	Gold
209394	TS	US	GA	55.6909	5.0000	6.2188	8.2363	0.0000	12.6037	0.0000	10.5842	13.0479	Silver
203489	BG	US	CA	55.4289	5.0000	10.5662	7.4940	3.9288	6.6792	0.2857	11.6634	9.8116	Silver
226589	AT	US	AZ	55.4247	4.2857	9.8762	6.3086	1.0162	5.7076	9.7143	6.6497	11.8664	Silver
212530	EW	US	IL	55.3770	5.0000	14.1525	6.9188	0.0000	2.0881	0.2857	14.2949	12.6370	Silver
213575	AL	US	MA	53.7093	5.0000	13.7858	3.6155	4.6474	4.5134	0.0000	11.4623	10.6849	Silver
223047	SB	US	IL	53.5381	5.0000	10.5662	3.4758	1.3030	2.0881	9.1429	8.7087	13.2534	Silver
224331	SW	US	AR	51.8857	5.0000	12.9082	7.8214	0.1846	9.0716	0.0000	6.2150	10.6849	Silver
206501	EM	US	IL	51.8777	4.2857	12.9082	5.9272	0.3128	2.4908	0.5714	12.8987	12.4829	Silver
228239	ZC	CA	BC	51.6533	5.0000	9.1582	7.0367	0.4154	3.0978	0.0000	13.5890	13.3562	Gold
203693	LJ	US	CA	50.8372	2.8571	12.9082	7.0367	2.7917	2.4908	0.0000	13.1465	9.6062	Silver
201267	YS	US	CA	50.3714	5.0000	0.4355	8.1349	14.0126	1.2915	0.2857	10.9372	10.2740	Silver
216652	BN	US	PA	50.3710	5.0000	12.9082	6.1827	0.6923	7.4374	1.4286	6.2423	10.4795	Silver
212166	EZ	US	CT	49.9093	5.0000	14.7028	8.5310	0.0000	8.5385	0.0000	10.0548	3.0822	Silver
202578	AB	US	PA	49.0002	5.0000	13.3717	4.0344	4.0033	4.1103	0.0000	7.1791	11.3014	Silver
215635	AV	US	TX	48.7895	5.0000	12.3944	7.4940	2.0815	4.5134	1.1429	5.8893	10.2740	Silver
214949	KS	US	CA	48.7283	5.0000	12.2856	7.6047	0.3692	10.1016	0.8571	5.3183	7.1918	Silver
203318	CC	US	NJ	48.1511	2.8571	12.9082	7.6047	3.7092	2.6928	1.1429	6.1917	11.0445	Silver
211167	RZ	CA	BC	47.6637	5.0000	0.7822	7.2683	2.7898	4.9142	0.2857	14.9112	11.7123	Silver
213673	SK	US	CA	47.3344	5.0000	12.2856	6.6787	0.5538	3.3005	0.5714	8.4649	10.4795	Silver

ID	Initial	Ctry.	S/P	Total	J	K	L	M	N	O	P	Q	Award
					5.0000	15.0000	10.0000	15.0000	15.0000	10.0000	15.0000	15.0000	
201935	XD	US	CA	47.1442	5.0000	7.6794	3.8949	0.0000	3.3005	9.9286	3.3682	13.9726	Bronze
205183	ES	US	NY	47.0426	5.0000	8.4222	6.3086	1.4179	6.6792	0.0000	7.2969	11.9178	Bronze
212175	LL	US	NJ	46.9479	5.0000	10.5662	7.7138	0.0000	9.9333	0.8571	2.6549	10.2226	Bronze
210373	NB	US	MA	46.7884	5.0000	3.1438	4.1737	1.0615	6.8705	8.7143	6.2150	11.6096	Bronze
204932	PX	CA	MA	46.7079	5.0000	11.2199	5.2694	0.5638	10.7606	0.8571	4.6124	8.4247	Bronze
217777	IO	US	CA	46.6265	5.0000	14.0828	7.4940	2.2590	6.2936	1.4286	0.0000	10.0685	Bronze
214770	AR	US	MD	46.5743	2.8571	11.2199	7.1532	0.7958	0.8976	0.2857	14.1184	9.2466	Bronze
206271	AS	US	IL	46.4247	5.0000	11.8308	6.6787	0.0000	0.0000	0.0000	12.7440	10.1712	Bronze
205254	AH	US	CA	46.0692	5.0000	9.1582	0.5307	4.4807	7.0606	1.1429	6.4187	12.2774	Bronze
203933	IL	US	MA	46.0279	3.5714	8.4222	5.5356	5.6914	0.8976	1.1429	11.1093	9.6575	Bronze
206869	AW	US	MA	45.6701	2.5000	10.5662	5.7978	5.5402	5.1137	0.0000	8.3440	7.8082	Bronze
208206	MW	US	WA	45.6534	5.0000	13.7858	7.6047	0.0000	2.6928	0.2857	3.5447	12.7397	Bronze
219560	PD	US	VA	45.4950	5.0000	11.8308	5.9272	0.7958	13.7220	0.0000	0.0000	8.2192	Bronze
222869	CR	US	CA	45.3582	5.0000	12.8095	2.1094	1.1154	5.9039	0.0000	6.2967	12.1233	Bronze
205762	JH	US	CA	45.2021	3.2143	13.3717	5.4029	4.8853	0.0000	0.0000	8.4649	9.8630	Bronze
221487	MD	US	MI	45.1189	5.0000	11.8308	6.9188	1.5246	4.3121	0.5714	5.5091	9.4521	Bronze
211915	BL	US	NY	44.9305	5.0000	6.2188	6.7994	7.5305	0.0000	0.0000	8.6969	10.6849	Bronze
209811	WJ	US	CA	44.4522	5.0000	11.2199	3.3363	1.9229	7.2496	1.1429	5.8477	8.7329	Bronze
229700	UD	US	NV	44.4113	5.0000	11.2199	8.1349	0.0000	6.6792	0.0000	13.3773	0.0000	Bronze
209919	TD	US	CA	44.3479	5.0000	14.4747	5.1349	0.7958	1.8877	0.0000	2.6712	14.3836	Bronze
202328	LV	US	NJ	44.2715	5.0000	8.4222	6.4333	0.0000	2.0881	0.0000	11.6430	10.6849	Bronze

ID	Initial	Ctry.	S/P	Total	J	K	L	M	N	O	P	Q	Award
					5.0000	15.0000	10.0000	15.0000	15.0000	10.0000	15.0000	15.0000	
201597	AY	US	TX	44.2297	5.0000	7.6794	4.5892	2.5856	9.4204	0.2857	2.2379	12.4315	Bronze
206173	EF	US	MA	43.8533	4.2857	13.3717	0.6190	1.9229	5.1137	0.0000	7.6499	10.8904	Bronze
223813	SO	US	CA	43.4591	5.0000	14.0828	7.2683	0.0000	1.0944	0.8571	3.6497	11.5068	Bronze
212601	ZC	US	PA	43.2820	5.0000	10.5662	7.1532	0.1846	9.4204	0.0000	10.9576	0.0000	Bronze
201310	AL	US	NY	43.0751	5.0000	6.9412	7.2683	5.1591	1.6882	0.0000	11.3676	5.6507	Bronze
209009	LZ	US	CA	42.8590	5.0000	12.3944	6.1827	0.0000	2.8952	6.5714	1.5961	8.2192	Bronze
201828	NY	US	CA	42.6426	4.2857	13.3717	3.7552	2.1407	5.1137	0.8571	5.1562	7.9623	Bronze
204317	XL	US	CA	42.4801	5.0000	0.0000	7.7138	0.0000	2.6928	0.0000	12.0735	15.0000	HM
202408	PC	US	IL	42.4749	2.8571	11.8308	6.1827	2.3737	4.9142	0.0000	7.1246	7.1918	HM
209651	NC	US	CA	42.1868	5.0000	8.4222	7.1532	0.5077	7.2496	0.0000	2.1418	11.7123	HM
221478	AF	US	LA	42.1826	4.2857	8.4222	4.4511	4.5681	3.7058	0.5714	4.9797	11.1986	HM
210881	TY	CA	ON	42.1444	5.0000	0.5955	6.7994	1.8102	4.5134	9.2857	2.8388	11.3014	HM
204996	LZ	US	CA	42.0181	5.0000	11.2199	3.6155	2.5903	6.4869	0.8571	10.6046	1.6438	HM
217189	JH	US	NJ	41.7836	5.0000	12.9082	0.0000	0.3128	3.3005	0.0000	10.6046	9.6575	HM
202550	SL	US	DC	41.6533	5.0000	10.5662	3.8949	0.4615	4.3121	3.4286	5.3599	8.6301	HM
216466	SA	US	CA	41.6007	5.0000	10.5662	0.5307	0.0000	2.0881	0.0000	13.4499	9.9658	HM
208046	AH	US	NV	41.5844	5.0000	12.3944	3.0583	2.8543	4.9142	1.4286	3.9209	8.0137	HM
217973	FH	US	MA	41.4923	5.0000	12.3944	5.6672	0.3128	3.7058	0.8571	0.3529	13.2021	HM
201472	YC	US	MN	41.1596	5.0000	6.2188	4.8635	0.0000	0.5001	0.0000	10.6046	13.9726	HM
201294	VG	US	VA	40.9246	5.0000	12.3944	7.4940	0.0000	0.0000	8.8571	7.1791	0.0000	HM
202523	AR	US	CA	40.8607	5.0000	11.8308	6.3086	0.8307	3.3005	1.1429	3.2006	9.2466	HM

ID	Initial	Ctry.	S/P	Total	J	K	L	M	N	O	P	Q	Award
					5.0000	15.0000	10.0000	15.0000	15.0000	10.0000	15.0000	15.0000	
215813	LF	US	MD	40.6126	5.0000	1.2505	6.5567	0.8646	4.3121	0.8571	12.5250	9.2466	HM
203826	CD	US	FL	40.4419	5.0000	12.3944	4.7266	0.0000	2.4908	0.2857	4.6540	10.8904	HM
211229	AT	US	OH	40.3433	5.0000	6.2188	6.3086	2.9189	2.6928	0.2857	8.2884	8.6301	HM
210275	WS	US	NY	40.0171	5.0000	9.1582	4.1737	0.0000	5.9039	0.0000	5.7128	10.0685	HM
201301	KH	US	CA	40.0002	3.5714	2.6702	7.6047	2.7760	0.8976	0.0000	12.0008	10.4795	HM
211522	JL	US	CA	39.6238	5.0000	5.5224	6.1827	3.6306	3.7058	1.7143	5.2379	8.6301	HM
216705	AM	US	OR	39.6213	4.6429	12.3944	3.8949	2.4406	3.0978	0.0000	0.0000	13.1507	HM
201221	JM	CA	NY	39.5890	5.0000	6.9412	4.4511	1.2529	3.9082	0.0000	4.8849	13.1507	HM
203620	MY	US	CA	39.5871	5.0000	3.1438	5.1349	0.5636	7.0606	2.2857	4.7889	11.6096	HM
217946	AL	US	MA	39.5642	5.0000	13.3717	7.0367	0.0000	0.0000	0.0000	14.1558	0.0000	HM
203951	RL	US	NY	39.5274	5.0000	13.7858	5.1349	0.0000	0.7002	0.0000	4.4270	10.4795	HM
206921	EW	US	CA	39.2770	2.8571	9.1582	7.7138	2.2590	2.6928	0.2857	6.2967	8.0137	HM
205263	AL	US	WA	38.9454	3.5714	7.6794	7.4940	1.6080	0.0000	0.0000	9.6029	8.9897	HM
216493	DY	US	MA	38.7174	5.0000	14.4747	5.9272	1.2000	2.0881	0.0000	1.2432	8.7842	HM
223528	PC	US	CA	38.4943	5.0000	11.8308	4.7266	1.9094	3.5032	0.0000	5.3599	6.1644	HM
208135	EB	US	MA	38.4328	4.2857	13.7858	6.0555	0.7846	0.0000	0.0000	5.3020	8.2192	HM
229238	IR	US	NY	38.2425	5.0000	12.3944	3.3363	0.9649	0.0000	0.0000	5.8620	10.6849	HM
202499	AL	US	CT	38.2420	5.0000	9.1582	5.6672	1.7264	2.0881	0.2857	7.1246	7.1918	HM
216509	HS	US	OH	38.2301	5.0000	6.9412	7.6047	1.5380	0.8976	0.0000	6.5911	9.6575	HM
226954	MB	US	GA	38.0778	4.6429	14.1525	4.9996	0.0000	0.0000	0.0000	10.5842	3.6986	HM
211960	SB	CA	BC	38.0154	5.0000	6.2188	6.3086	2.5549	1.2915	0.8571	9.4146	6.3699	HM

ID	Initial	Ctry.	S/P	Total	J	K	L	M	N	O	P	Q	Award
					5.0000	15.0000	10.0000	15.0000	15.0000	10.0000	15.0000	15.0000	
210104	DP	US	MI	37.9874	1.7857	9.1582	7.6047	0.8841	2.0881	7.1429	4.8032	4.5205	HM
212326	NM	US	CA	37.9292	5.0000	2.2464	7.7138	2.8543	6.0992	0.0000	5.5908	8.4247	HM
227819	OM	US	CA	37.8635	5.0000	13.7858	8.5310	0.4154	0.0000	0.0000	2.1176	8.0137	HM
208787	AK	US	HI	37.7834	4.6429	11.2199	5.7978	2.4864	0.0000	8.5714	4.6540	0.4110	HM
208493	RM	CA	BC	37.6649	4.2857	13.7858	8.1349	0.0000	0.0000	0.0000	5.2941	6.1644	HM
207582	MJ	US	CA	37.6307	5.0000	11.7123	0.0000	2.4301	1.4894	0.5714	8.0028	8.4247	HM
202998	CS	US	AZ	37.5882	5.0000	6.2188	2.1094	5.1953	4.9142	0.5714	5.3599	8.2192	HM
202453	AL	US	CA	37.5822	4.2857	10.5662	5.1349	0.0000	1.6882	0.0000	8.3558	7.5514	HM
205717	TR	US	NJ	37.5457	5.0000	9.1582	4.0344	2.3774	4.7141	0.2857	3.1917	8.7842	HM
226516	GG	CA	BC	37.4542	5.0000	6.9412	2.2414	1.3662	4.3121	2.2857	3.1843	12.1233	HM
213771	DF	US	CA	37.4450	5.0000	0.0000	0.2340	0.0000	13.3128	9.8571	0.0000	9.0411	HM
211602	JW	US	CA	37.4351	5.0000	8.4222	8.0319	0.7958	2.4908	0.0000	3.2423	9.4521	HM
208028	HD	US	MA	37.3857	5.0000	12.8095	5.9272	0.0000	8.7175	0.0000	0.0000	4.9315	HM
209429	RD	US	NY	37.3026	5.0000	14.4747	4.7266	0.0000	3.7058	0.0000	5.6969	3.6986	HM
227775	AA	US	CA	36.8311	5.0000	9.8762	2.9200	0.9231	7.0606	0.2857	3.3682	7.3973	HM
209241	PQ	US	MI	36.7031	5.0000	9.8762	5.7978	0.0000	8.3581	0.0000	0.8902	6.7808	HM
217964	LC	CA	GA	36.5832	5.0000	4.8608	5.9272	1.7382	5.5105	0.0000	5.9438	7.6027	HM
213851	KP	US	NY	36.5000	2.8571	6.0771	3.1971	2.3182	2.2892	0.2857	7.8146	11.6610	HM
203915	RF	US	CA	36.4379	5.0000	12.9082	6.1827	0.8308	4.1103	0.8571	1.4118	5.1370	HM
201873	AB	US	MA	36.2599	3.9286	0.9993	6.1827	6.2896	2.8952	0.0000	5.5364	10.4281	HM
208769	AT	US	CT	36.1422	5.0000	3.6677	6.7994	0.0000	5.7076	0.8571	2.6549	11.4555	HM

ID	Initial	Ctry.	S/P	Total	J	K	L	M	N	O	P	Q	Award
					5.0000	15.0000	10.0000	15.0000	15.0000	10.0000	15.0000	15.0000	
205432	ET	US	MN	35.8984	4.2857	5.5224	0.0000	0.0000	9.5928	9.7143	1.2353	5.5479	
203559	DF	US	NY	35.7324	5.0000	9.8762	6.0555	0.2769	2.0881	0.0000	6.0658	6.3699	
209410	VG	US	IL	35.6260	5.0000	12.9082	5.1349	0.7846	1.4894	0.2857	2.8314	7.1918	
202435	YS	US	CA	35.4328	5.0000	4.2410	6.0555	1.7538	3.3005	0.0000	7.2738	7.8082	
223537	DL	US	CA	35.3170	5.0000	3.1438	6.0555	0.0000	7.9936	0.0000	1.4118	11.7123	
216581	EM	US	IL	35.1903	5.0000	4.8608	5.7978	0.0000	0.0000	0.0000	8.6413	10.8904	
202765	JS	US	NC	35.1760	5.0000	3.6677	4.7266	0.0000	6.8705	0.0000	14.9112	0.0000	
214529	EZ	US	NC	35.1395	5.0000	10.5662	4.1737	0.7958	3.0978	0.2857	6.3915	4.8288	
222002	RS	CA	BC	35.1119	5.0000	0.0000	8.2363	0.0000	8.3581	0.0000	6.1202	7.3973	
226160	AK	US	CA	34.7463	5.0000	0.0000	5.9272	0.6923	1.4894	0.0000	11.4662	10.1712	
205824	RF	US	CT	34.7128	2.8571	9.1582	4.1737	1.7571	3.3005	2.0000	11.4662	0.0000	
213628	AC	US	AZ	34.6645	5.0000	9.1582	5.2694	1.7264	2.8952	0.0000	5.8893	4.7260	
208821	DS	US	CA	34.5245	5.0000	12.3944	5.6672	1.3160	3.0978	0.0000	2.1176	4.9315	
207546	JW	US	OH	34.4795	3.9286	2.6702	2.6455	2.8433	8.3581	0.5714	4.6268	8.8356	
205986	OC	US	MA	34.3074	5.0000	1.1973	5.9272	3.8630	3.9082	2.0000	4.6035	7.8082	
216386	JH	US	NH	34.1165	5.0000	13.7858	4.5892	0.6138	3.3005	0.0000	5.1834	1.6438	
212219	SA	US	PA	33.7237	5.0000	10.4309	3.6155	0.0000	2.6928	0.8571	3.7301	7.3973	
213762	AC	US	CA	33.7230	5.0000	11.8308	5.6672	0.0000	2.6928	0.0000	8.5322	0.0000	
204013	RD	US	TX	33.6253	5.0000	10.5662	1.7237	0.2769	2.0881	0.5714	5.5908	7.8082	
202202	AD	US	CA	33.4876	5.0000	0.0838	6.9188	0.0000	3.3005	0.0000	9.3489	8.8356	
203773	RW	US	MD	33.4184	3.5714	4.2410	4.1737	2.3182	4.1103	0.5714	6.4187	8.0137	

ID	Initial	Ctry.	S/P	Total	J	K	L	M	N	O	P	Q	Award
					5.0000	15.0000	10.0000	15.0000	15.0000	10.0000	15.0000	15.0000	
205566	AW	US	NV	33.3689	5.0000	1.5397	4.9996	0.8308	2.0881	0.0000	7.3011	11.6096	
215760	NZ	US	CA	33.2946	1.4286	2.6702	3.7552	3.0479	2.0881	0.0000	10.2361	10.0685	
228220	BF	US	TX	33.2102	5.0000	4.8608	7.0367	0.0000	1.4894	0.2857	2.6712	11.8664	
208279	IW	US	CA	33.1875	5.0000	0.0000	7.9274	1.6352	2.0881	0.2857	12.1929	4.0582	
217376	CC	US	CA	33.1799	5.0000	5.5224	3.1971	2.0815	3.3005	0.8571	2.5364	10.6849	
209704	ER	US	CA	33.1463	5.0000	11.8308	5.4029	0.0000	0.0000	0.2857	0.3529	10.2740	
215421	MK	US	CA	32.9078	2.1429	9.1582	2.2414	0.9374	1.2915	0.8571	5.1834	11.0959	
210239	JK	US	CT	32.7928	5.0000	2.2464	0.6190	4.4587	1.2915	0.8571	9.0735	9.2466	
201515	JW	US	MA	32.6246	5.0000	1.2505	0.1253	0.0000	8.5385	9.2857	2.6712	5.7534	
206226	WW	US	NY	32.6224	5.0000	9.8762	8.0319	0.0000	0.0000	9.7143	0.0000	0.0000	
211238	MZ	US	IL	32.0517	5.0000	12.3944	0.0000	0.4615	3.3005	0.0000	2.4706	8.4247	
228284	PQ	US	CA	31.9320	5.0000	11.8308	4.5892	2.6733	6.0992	0.8571	0.8824	0.0000	
211906	DC	US	VA	31.5320	5.0000	6.2188	4.8635	0.3231	1.4894	0.0000	4.5961	9.0411	
218311	LZ	US	TX	31.4173	5.0000	12.9082	0.6190	3.1125	8.8952	0.0000	0.8824	0.0000	
202756	KC	US	PA	31.3945	5.0000	12.9082	4.9996	1.0775	0.7002	0.0000	4.2432	2.4658	
204291	AZ	US	IL	31.2695	4.2857	10.5662	1.2416	1.0151	7.0606	0.2857	2.2941	4.5205	
210417	RZ	US	CA	31.1964	5.0000	9.1582	0.0000	0.2308	1.0944	2.0000	6.9322	6.7808	
207573	YC	CA	ON	31.1587	5.0000	9.8762	6.3086	0.0000	0.8976	0.8571	0.0000	8.2192	
203005	JZ	US	CA	31.1140	5.0000	7.6794	5.6672	0.5538	3.5032	0.2857	0.0000	8.4247	
217072	IS	US	NY	31.0088	4.2857	9.8762	3.6155	0.5077	5.1137	0.0000	3.7059	3.9041	
207886	EL	US	CA	30.9937	5.0000	6.9412	1.2416	0.3692	5.3125	0.2857	3.0079	8.8356	

ID	Initial	Ctry.	S/P	Total	J	K	L	M	N	O	P	Q	Award
					5.0000	15.0000	10.0000	15.0000	15.0000	10.0000	15.0000	15.0000	
213940	LD	US	NY	30.9441	3.5714	12.3944	0.4476	0.0000	1.6882	0.0000	0.0000	12.8425	
216821	JK	US	NV	30.9339	5.0000	11.0924	5.4029	0.0000	8.7175	0.0000	0.7211	0.0000	
214734	PC	US	CA	30.7574	5.0000	14.7559	7.7138	0.0000	0.0000	0.0000	0.0000	3.2877	
201944	YZ	US	MA	30.7475	5.0000	7.6794	3.7552	1.4164	3.0978	1.7143	2.1255	5.9589	
226776	ES	US	CA	30.7052	2.8571	12.9082	4.7266	0.7141	2.2892	0.2857	5.4859	1.4384	
218295	AL	US	TX	30.5413	4.2857	5.5224	5.1349	0.1846	2.8952	0.0000	5.5322	6.9863	
210925	MA	US	CA	30.5186	5.0000	11.0924	6.0555	0.0000	1.4894	0.8571	6.0242	0.0000	
201702	AL	US	WA	30.4749	5.0000	8.4222	0.0000	0.0000	5.7076	0.8571	8.6387	1.8493	
202131	RZ	US	CA	30.4532	2.8571	2.6702	2.2414	0.1385	1.6882	0.8571	8.2884	11.7123	
210676	JK	US	MA	30.1732	2.8571	13.3717	4.0344	0.0000	1.4894	0.0000	5.1329	3.2877	
202676	SU	US	NJ	30.0783	5.0000	0.2989	0.1253	1.7571	7.6240	0.2857	7.1791	7.8082	
206002	IS	US	MA	29.9390	5.0000	7.5310	3.1971	0.4154	2.2892	1.1429	0.7059	9.6575	
219837	GS	US	NY	29.7723	5.0000	3.6677	2.9200	6.3918	0.8976	0.0000	5.1418	5.7534	
208849	TG	CA	ON	29.5411	5.0000	3.6677	1.9790	1.9507	2.2892	0.2857	2.8620	11.5068	
211924	GY	US	NY	29.4951	4.2857	6.9412	5.5356	0.0000	1.2915	0.8571	4.4196	6.1644	
204889	AG	US	PA	29.1308	5.0000	9.8762	7.2683	0.0000	0.0000	0.0000	0.0000	6.9863	
226963	PV	US	CA	29.0874	5.0000	1.5397	2.1094	0.4615	3.3005	1.1429	7.1087	8.4247	
209946	LS	US	NJ	29.0845	5.0000	3.6677	5.9272	0.0000	1.8877	0.0000	4.5882	8.0137	
211087	VS	US	WA	29.0694	5.0000	0.9993	3.1971	2.5961	1.4894	0.8571	5.8893	9.0411	
214654	CL	US	MA	29.0162	5.0000	11.2199	3.7552	0.0000	0.0000	0.0000	0.0000	9.0411	
205575	WT	US	MA	28.9768	5.0000	2.2464	9.0775	0.0000	1.8877	0.2857	0.0000	10.4795	

ID	Initial	Ctry.	S/P	Total	J	K	L	M	N	O	P	Q	Award
					5.0000	15.0000	10.0000	15.0000	15.0000	10.0000	15.0000	15.0000	
213398	ZZ	US	CA	28.8554	5.0000	3.6677	4.9996	0.7958	0.0000	0.0000	7.4060	6.9863	
206235	CD	US	CA	28.4547	2.8571	4.8608	3.7552	0.7958	0.5001	0.0000	8.2884	7.3973	
213897	NJ	US	NY	28.2059	5.0000	8.4222	5.7978	0.4615	3.9082	0.8571	0.8824	2.8767	
225900	CL	US	NY	27.7015	2.8571	1.8705	4.5892	0.7385	3.0978	0.0000	5.7128	8.8356	
215546	RN	US	TX	27.6967	5.0000	10.5662	6.5567	1.3385	0.0000	0.0000	4.2353	0.0000	
214155	EG	US	IL	27.6546	4.2857	2.6702	0.0000	0.7141	1.6882	0.0000	7.4060	10.8904	
213735	PM	US	CA	27.4435	2.8571	8.4222	7.7138	0.0923	8.3581	0.0000	0.0000	0.0000	
227926	MM	US	FL	27.2765	2.8571	7.6794	3.8949	1.0652	2.8952	0.0000	2.3094	6.5753	
203130	GG	US	PA	27.2245	3.5714	2.2464	6.6787	0.0000	8.3581	0.0000	0.0000	6.3699	
208171	PB	US	PA	27.1867	5.0000	6.2188	1.9790	0.0000	0.0000	0.0000	7.0026	6.9863	
220291	KS	US	WA	27.1192	5.0000	4.8608	1.5993	0.0000	1.0944	2.5714	5.0070	6.9863	
205646	NL	US	CA	27.0545	5.0000	8.4222	1.2416	1.0652	1.0944	0.0000	4.0667	6.1644	
203862	AD	US	GA	26.9277	5.0000	0.5955	4.5892	0.7958	8.7175	0.2857	6.9440	0.0000	
224661	ET	US	IN	26.1739	5.0000	3.6677	8.0319	0.0000	0.0000	0.0000	7.8305	1.6438	
221432	GV	US	CA	25.9320	5.0000	5.5224	4.4511	2.2808	2.4908	0.0000	3.7211	2.4658	
215653	KG	US	IL	25.6903	5.0000	0.0000	4.9996	0.0000	7.0606	0.0000	0.0000	8.6301	
210827	TZ	US	CA	25.4907	5.0000	1.5397	1.9790	1.2659	4.7141	1.1429	3.8902	5.9589	
228346	NS	US	NY	25.3218	5.0000	12.3944	7.9274	0.0000	0.0000	0.0000	0.0000	0.0000	
214609	AK	US	OH	25.2148	5.0000	9.8762	7.9274	0.3231	2.0881	0.0000	0.0000	0.0000	
215476	RW	US	VA	24.9535	5.0000	0.0000	5.4029	5.1302	9.4204	0.0000	0.0000	0.0000	
212889	ZB	US	TN	24.9160	1.4286	6.0771	0.0000	1.8665	2.8952	0.0000	5.6623	6.9863	

ID	Initial	Ctry.	S/P	Total	J	K	L	M	N	O	P	Q	Award
					5.0000	15.0000	10.0000	15.0000	15.0000	10.0000	15.0000	15.0000	
228827	AR	US	MI	18.5793	3.5714	1.2505	2.5097	2.5284	0.5001	0.0000	0.0000	8.2192	
219800	AO	US	IL	17.6021	5.0000	2.6702	7.0367	0.0000	2.8952	0.0000	0.0000	0.0000	
204488	DP	US	NJ	17.2524	5.0000	3.1438	0.5307	0.0000	5.1137	0.0000	0.1765	3.2877	
228774	JA	US	FL	16.8022	5.0000	0.5955	0.0479	0.1385	2.2892	1.7143	5.1675	1.8493	
216750	MR	US	OR	15.5447	5.0000	0.0000	7.2683	0.0000	1.6882	0.0000	1.5882	0.0000	
214388	MY	US	CA	12.9617	1.4286	9.1582	2.3749	0.0000	0.0000	0.0000	0.0000	0.0000	
205593	JL	US	TX	11.4482	2.8571	0.7822	0.0824	0.2308	1.0944	0.0000	1.0588	5.3425	
222459	AL	US	CA	11.0403	5.0000	0.5955	0.9124	0.0000	1.8877	0.0000	1.4118	1.2329	
211201	CW	CA	ON	9.9728	3.2143	0.2989	6.1827	0.2769	0.0000	0.0000	0.0000	0.0000	
225009	AL	US	NJ	9.2953	5.0000	0.0838	2.9200	0.0000	1.2915	0.0000	0.0000	0.0000	
213478	KP	US	IL	8.6479	2.8571	0.2989	0.8102	0.0000	4.1103	0.5714	0.0000	0.0000	
212736	TS	US	NY	3.1146	1.4286	0.0000	0.0000	0.7958	0.0000	0.0000	0.8902	0.0000	

B. Qualification Results¹

Qualified for the USA Team

ID	First	Last	S/P	Score	
201276	Jason	Liu	PA	74.5729	USA Red
204282	Darren	Su	ID	69.9349	
215412	Sylvia	Chen	CA	65.8895	
201445	Rehan	Babu	CA	62.8206	
202159	Edward	Zeng	CA	61.9710	USA Blue
201926	Sirui	Sheng	NJ	60.4769	
208983	Nathan	Mei	MI	57.6421	
202211	Katherine	Li	CA	56.6477	

Qualified as Alternates for the USA Team

ID	First	Last	S/P	Score
209394	Toby	Swanagan	GA	55.6909
203489	Boon	Goetsch	CA	55.4289
226589	Adam	Teets	AZ	55.4247
212530	Elena	Whitford	IL	55.3770

¹ Students who qualified will be contacted individually with details about participation requirements and expectations related to IOL 2026.

Qualified for the CANADA ANGLOPHONE Team

ID	First	Last	S/P	Score
202710	Yiling	Jiang	ON	66.6381
207724	Peter	Dong	BC	58.4368
202738	Perry	Dai	ON	56.1443
228239	Zi Kun	Chen	BC	51.6533

Qualified as Alternates for the CANADA ANGLOPHONE Team

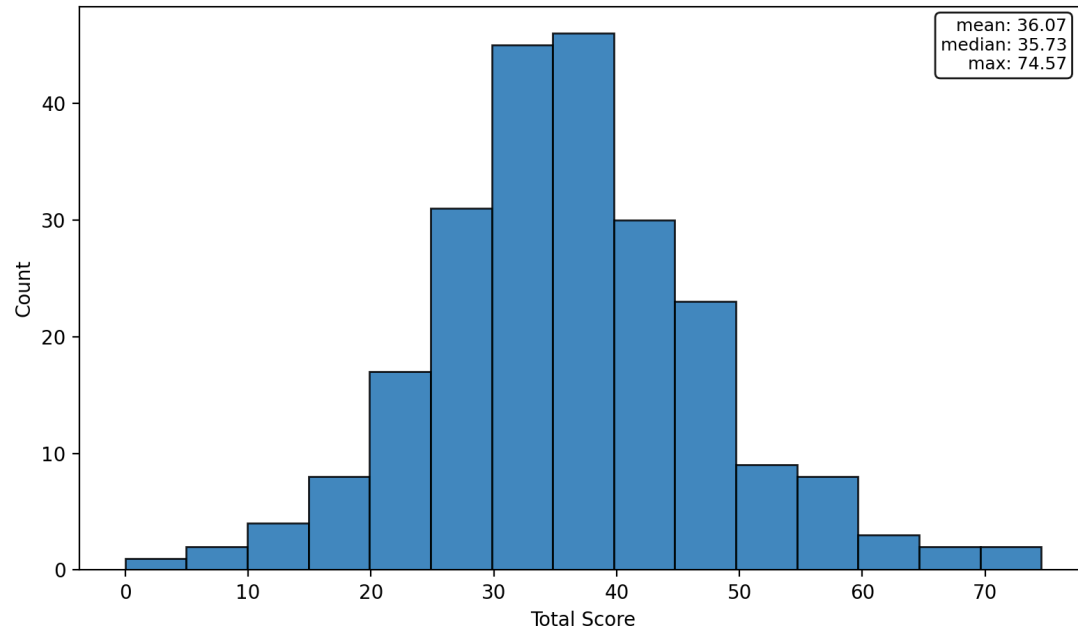
ID	First	Last	S/P	Score
211167	Ray	Zhang	BC	47.6637
204932	Patrick	Xu	MA	46.7079

C. Problem Results & Best Solution Awards

Problem <i>(language/topic)</i>	Max	Mean	Median	Highest	Best Solutions ²
(J) Strawberry Shortcake <i>(hallucinations in large language models)</i>	5.0000	4.5470	5.0000	5.0000	(n/a)
(K) Speaking Your Truth <i>(Dene Sų́tiné semantics)</i>	15.0000	7.7398	9.1582	14.7559	(n/a)
(L) Hide and Seek in Hunzib <i>(Hunzib verb forms)</i>	10.0000	4.7726	5.1349	9.7175	Rehan Babu (201445)
(M) Can You Speak Aikanā? <i>(Aikanā verb morphology)</i>	15.0000	1.4155	0.7846	14.0126	Yu Kiu Song (201267)
(N) A Token of Your Attention <i>(attention mechanisms in natural language processing)</i>	15.0000	3.5940	2.8952	15.0000	Michael Middlezong (218044) Patrick Du (219560)
(O) Sum Times in Na <i>(Na numerals)</i>	10.0000	1.1908	0.0000	10.0000	Sirui Sheng (201926)
(P) Wear There's a Will <i>(Kalaallisut syntax)</i>	15.0000	5.4548	5.2379	15.0000	Allison Guan (212852)
(Q) Sea Saw <i>(Anindilyakwa verb morphology)</i>	15.0000	7.3748	8.2192	15.0000	Xinyi Li (204317)

² Multiple best solutions for a problem are not listed in any particular order.

D. Statistics



Scores of zero are not included in the per-problem score distributions and statistics below.

